

Global Glass Front Vendor (GGFV)

FEATURES & SPECIFICATIONS

GGFV Model Number	GF9
Total Can Capacity with 7 Shelves	567
Total PET Bottle Capacity with 5 Shelves	360
# of Selections with 7 Shelves	63
# of Selections with 5 Shelves	45
Dimensions* - H x W x D	72" x 47" x 34"
Shipping Weight*	715 lbs.
Operation Voltage	115V 60Hz
Amp Rating	8
Energy Consumption (DOE)	≤ 4.4 kWh/day
Lighting	LED
Refrigerant	R513A
Lock Type	T-Handle
Capacity per Column	
8oz. / 12oz. Can	9
250ml Can	11
16.9 oz. / 20oz. PET Bottle**	8

* Dimensions and shipping weight will vary slightly.
** Product capacities will vary based on the shape and size of the bottle.

New & Improved Glass Front Vendor (GF9)



- **Certifications & Requirements** - ADA compliant, UL certified, and meets or exceeds DOE requirements.
- **Unique Product Catcher** - The product catcher is based on advanced, cutting-edge technology. It is designed to scoop the product from the bottom and cradle it to the vend hopper, preventing any drops. Its simple design makes it highly reliable and easy to maintain.
- **Electronics Drawer** - The major electronic components are housed in a removable, roll-out drawer located on the right side of the machine. The drawer design allows easy access to major electronic components for hassle-free servicing.
- **Energy Management Features** - These features are included on every model and make the GGFV one of the most energy efficient glass front vendors available: LED lighting, real time clock, lighting and refrigeration controls and cyclopentane injected foam insulation (HFC free).
- **Two Position Trays & First-In-First-Out (FIFO) Loading** - Each removable, lightweight tray pulls out and can be angled downward for easy product filling. New products can be loaded behind existing products to ensure proper rotation and delivery of cold product to customer. FIFO loading reduces inventory waste by dispensing older products before newer refills.
- **LED Illumination** - High intensity interior LED lights standard. LED technology eliminates expensive bulb replacements while providing brighter product illumination. LED lights are more energy efficient and provide lower overall life costs.

SandenVendo America, Inc. offers a complete line of parts, accessories, supplies and add-on security devices - call for more information.

Global Glass Front Vendor (GGFV)

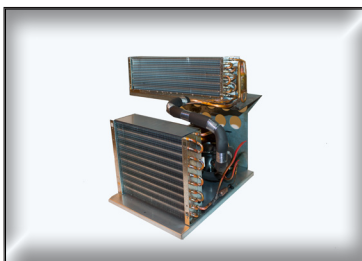
FEATURES & BENEFITS

The GGFV's quick drink delivery (*in less than 8 seconds!*) and user-friendly features make it a front-running Glass Front Vendor on the market:

- An optic sensor ensures proper product delivery and never allows a customer to feel cheated by a failed product vend cycle.
- All mechanical parts are located inside the cabinet eliminating misalignment problems.



- An external hinge allows the GGFV to be banked.
- The roll-out electronics drawer allows for wide access to all electrical components and payment systems. The drawer protects the control board from any accidental product spills during re-stocking.
- Larger, brighter, easier to read Vacuum Fluorescent Display for better consumer communication. (*optional*)

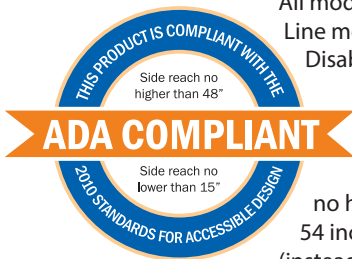


At SandenVendo America, we take our commitment to the environment very seriously. That's why we're proud to offer our full range of vending machines charged with low GWP alternate refrigerants. All models are CUL listed and meet or exceed DOE requirements. R513a is a safe refrigerant with a zero Ozone Depleting Potential and a Global Warming Potential (GWP) of 573.



R-290 (HC) vs. R-134a Over 100 Years

Refrigerant	R-134a	R-513a
Ozone Destructive Potential	0	0
Global Warming Potential	1,430	573
Operating High Side Pressure	150 PSig	200 PSig



All models in the GGFV Equipment Line meet the current Americans with Disabilities Act 2010 Standards for Accessible Design. The reach range requirements have been changed to provide that the side reach range must now be no higher than 48 inches (instead of 54 inches) and no lower than 15 inches (instead of 9 inches).



All models in the GGFV Equipment Line meet or exceed the department of Energy 2019 Efficiency Standards.