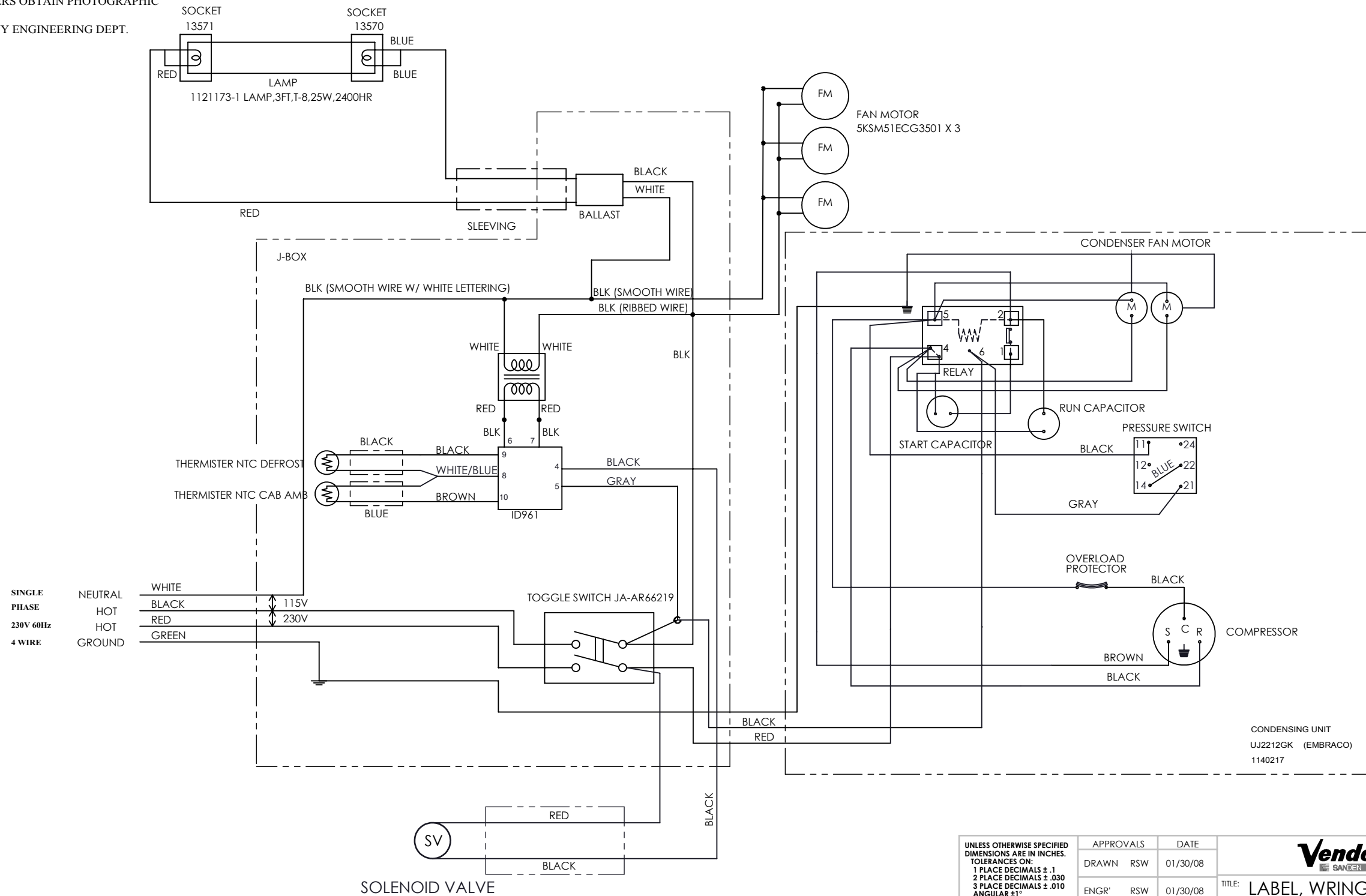


- MATERIAL TO BE POLYESTER FILM WITH PRESSURE SENSITIVE ADHESIVE APPLIED TO BACK SIDE.
- TEXT AND CHARACTERS TO BE BLACK ON WHITE BACKGROUND.
- LABEL TO HAVE .25 IN. MINIMUM BORDER AROUND ENTIRE PRINTED AREA (8 X 10.5 IN. APPROX. OVERALL SIZE).
- FOR DETAILS OF TEXT AND CHARACTERS OBTAIN PHOTOGRAPHIC FACIMILE FROM THE VENDO COMPANY ENGINEERING DEPT.

REVISIONS					
ECN. NO.	ZONE	DWG REV	DESCRIPTION	DATE	APPROVED
49973	~	A	DRAWING RELEASE	01/30/08	RSW
~	~	~	~	~	~
~	~	~	~	~	~
~	~	~	~	~	~



THIRD ANGLE PROJECTION



CRITICAL CHARACTERISTIC SYMBOLS

- <A> APPEARANCE
- <C> CRITICAL DIMENSION
- <F> FIT / FUNCTION
- <S> SAFETY

3

WIRING DIAGRAM

2

UNLESS OTHERWISE SPECIFIED DIMENSIONS ARE IN INCHES. TOLERANCES ON:  
 1 PLACE DECIMALS ± .1  
 2 PLACE DECIMALS ± .030  
 3 PLACE DECIMALS ± .010  
 ANGULAR ± 1°

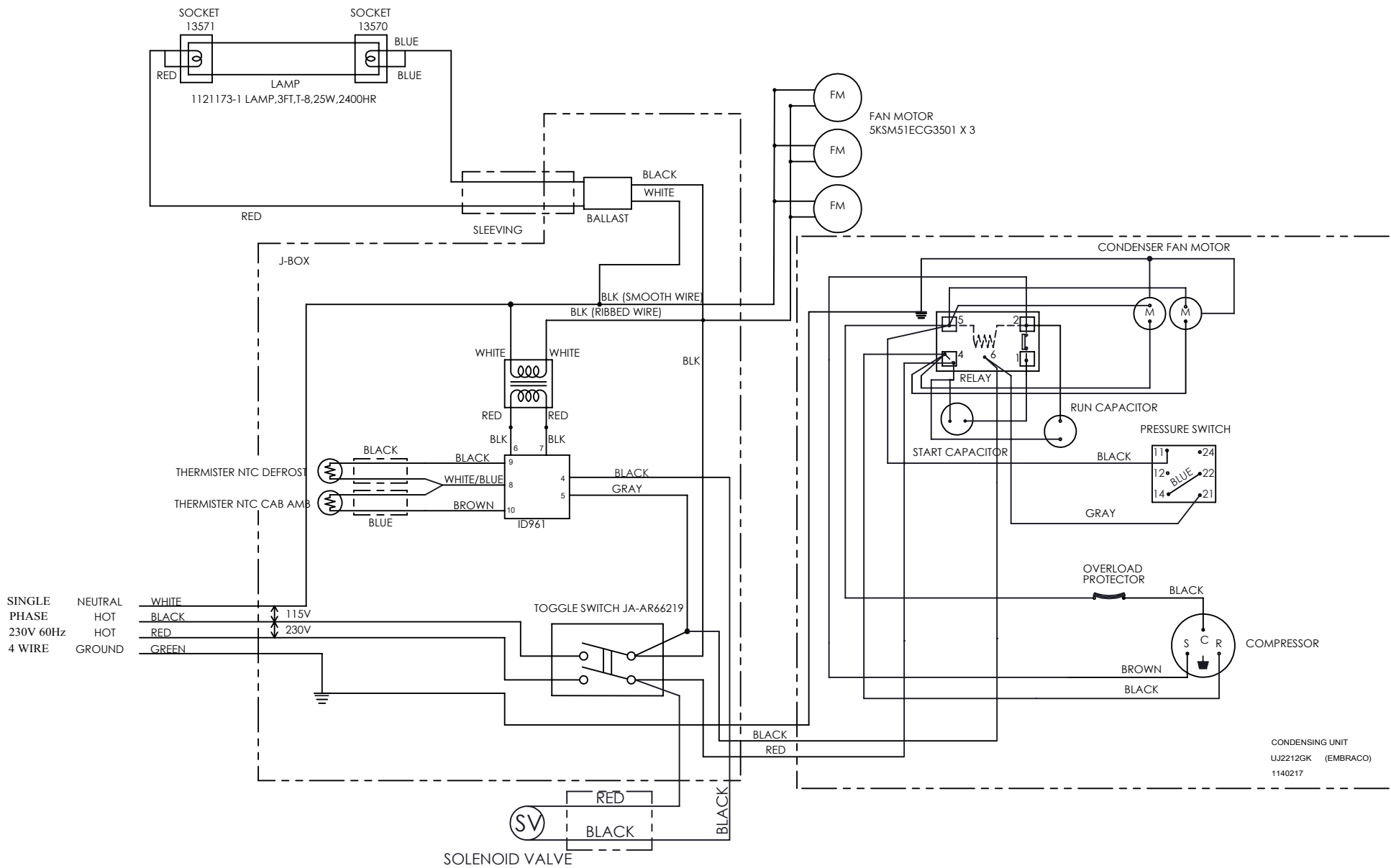
MATERIAL	SPEC.
SEE NOTE 1	~
FINISH	SPEC.
XX	~

APPROVALS	DATE
DRAWN RSW	01/30/08
ENGR' RSW	01/30/08

This drawing or specification is CONFIDENTIAL and data herein is not to be revealed to any party without the prior written consent of SANDENVENDO AMERICA. No duplication is permitted and it must be returned to SANDENVENDO AMERICA upon demand.

<b>Vendo</b> SANDEN VENDO AMERICA, INC.	
TITLE: LABEL, WRING DIAGRAM RD8 REMOTE 1504	
SIZE B	PART REV A
DWG. NO: 1160769	
SCALE 1:1	Solidworks SHEET 1 OF 2

1



WIRING DIAGRAM