

RD-3



BOHN condenser with baffled fan sections and PSC motors

Additional space for merchandising and promotional messages

Larger lighting space for better product visibility

Fully adjustable shelves allow the case to accommodate products of any size



RA-C

Performance

A larger compressor increases display case productivity

- RD-3 utilize a 1.0 HP compressor

Shelf Configurations (6)

Increase product capacity with multiple shelf configurations

- RD-3 provides a total of 6 selling surfaces and over 26 cubic feet of product space

Lighting

Improved lighting creates an attractive selling environment while showcasing available products

Product Display

Glass end plates and two position shelving improve visual presentation and increase "impulse-buy" sales

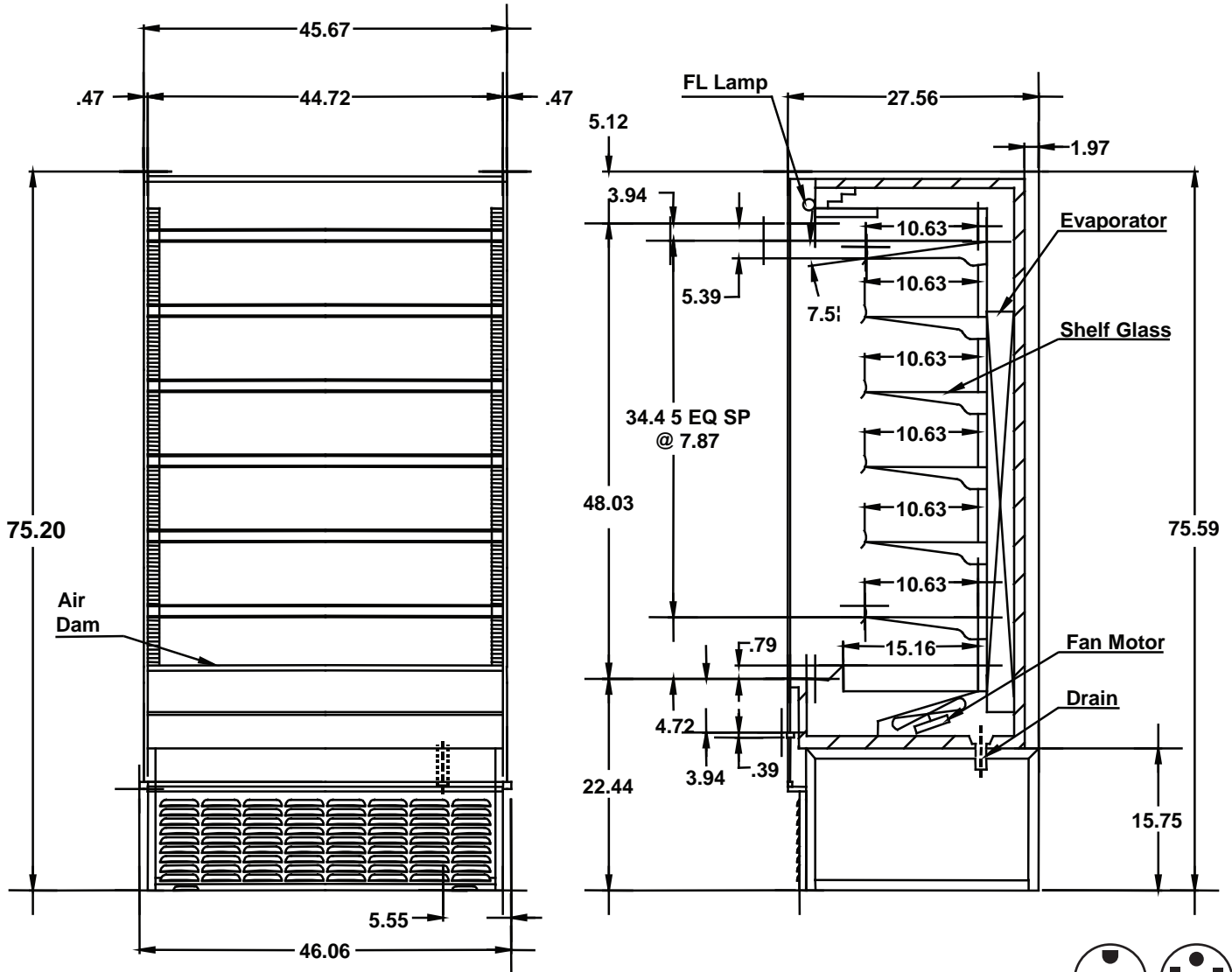
Refrigeration System

Holds desired product temperatures while cold air recirculation system seals in freshness and extends product shelf life

Space Saving Design

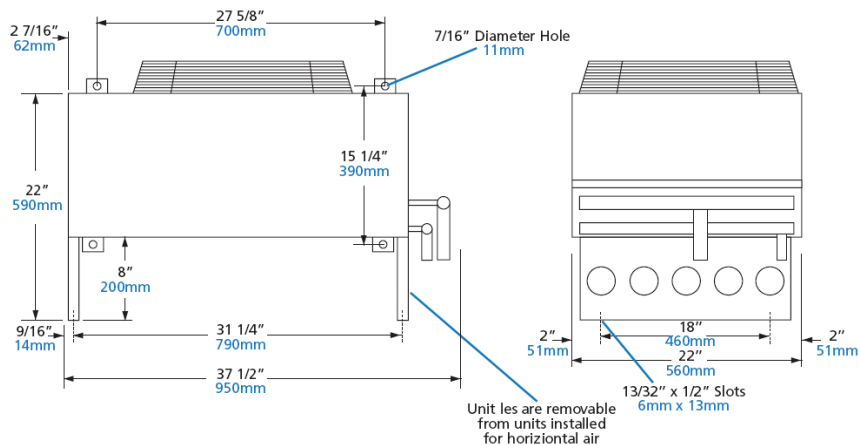
Versatile design allows for a wide variety of unit placement options

- RD-3 designed for back to back aisle, wall, or end-cap display placement



NEMA 6-15R NEMA 14-20P

* Either plug available



SPECIFICATIONS

RD-3 REMOTE AIR-COOLED REFRIGERATED DISPLAY		
Product Temperature	Below 40°F	
Environmental Conditions	75°F, 55% relative humidity, maximum air velocity = 60 ft/min	
External Dimensions	Height	75.59"
	Width	45.67"
	Depth	27.56"
Shelves (6 Total)	10.63" D x 44.7" L	
Structure	Outer Box	Glass & baked acrylic resin finish on electrolytic zinc-coated steel
	Inner Box	Baked acrylic resin finish on electrolytic zinc-coated steel
	Insulation	Rigid polyurethane foam
Electrical Parts 115V 60Hz Single-Phase	Evaporator Fan Motor	6 Watts, 3 each
	Lighting	25 Watts, 0.39 Amp
Electrical Parts 230V 60Hz Single-Phase	Compressor & Condenser Fan Motor	1.0HP, 8.5 Amp
Refrigerant	R-22	
Evaporator	Fin-tube type	
Expansion Valve	Internally Equalized Automatic Thermal-Expansion Valve	
Solenoid Valve	Hermetic Direct Acting Type Solenoid Valve for Refrigeration	
Thermostat	Electronic-Defrost on Demand (10 - 30 minutes, every 2 hours)	
Drain Pipe Dimension	1.25" copper tube	
Internal Volume	26.4 cubic feet	
Weight	560 lbs.	
Noise	< 65 DB at 3.3 ft.	
Agency Approvals	UL, UL NSF	
Top Shelf Tilt	7.5°	

BOHN CONDENSER

Model	Condenser Capacity MBH (R-22)			Fan Data			External Dimensions (in.)			Connections (in.)		Weight (lbs.)
	THR @ 30°F TD	THR/Circ. @ 1°F TD	Tube Circ. Available	Qty.	HP	FLA @ 230V	L	W	H	Inlet	Outlet	
DVT001	22.9	0.76	1	1	¼	2.0	37 ½	22	22	¾	¾	96

NOTE: The manufacturer reserves the right to make product improvements and change specifications without notice.



IMPULSE SERIES

Refrigerated Display Cases